

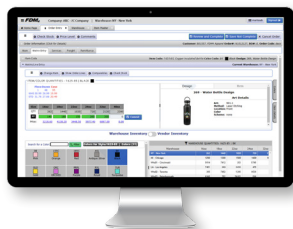


***FDM<sub>4</sub>***  
ERP WMS ECOM DECO

# — INTEGRATED —

## SOFTWARE SOLUTIONS

SIMPLE. SMART. SECURE.



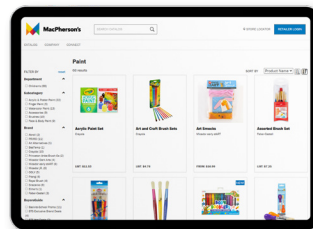
### ERP

Designed for  
Your Industry



### WMS

Making Every  
Step Count



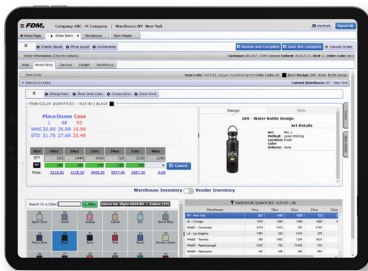
### ECOM

Business B2B &  
Retail B2C



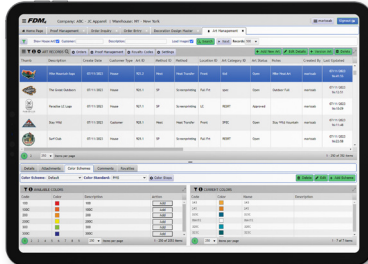
### DECO

Bringing Logos  
to Life



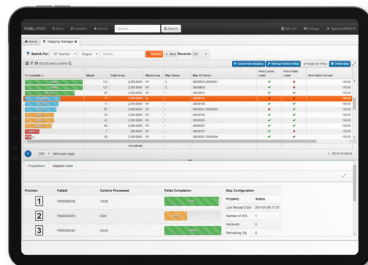
## Order Management & Sales

- Order Processing
- Decoration Entry
- B2B & B2C ECOM
- EDI/EASI & PromoStandards
- Credit Card Processing
- Returns & Claims



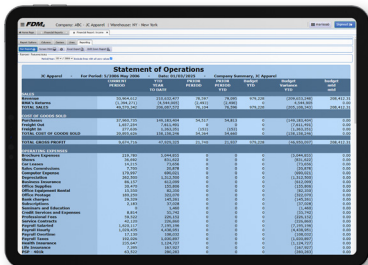
## Decoration & Print Shop Management

- Art & Design Manager
- Proof Approval Process
- Pricing & Costing by Design
- Production Flow Scheduling
- Production Tracking
- Internal & External Decoration



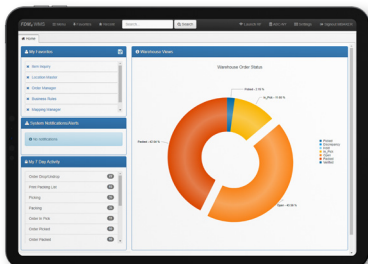
## Inventory & Supply Chain Management

- Forecast Replenishment
- Purchasing & ASN's
- Manufacturing
- Inventory Control
- Warehouse Management
- Vendor Portal



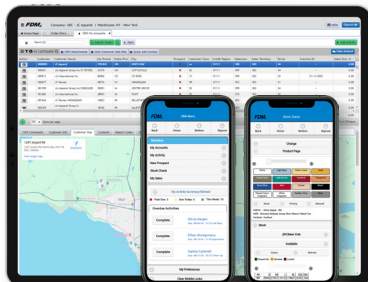
## Financial Management

- General Ledger
- Accounts Receivable
- Financial Reporting
- Accounts Payables
- Multi-Company Consolidation
- Multi-Currency



## Business Intelligence

- Enterprise Reporting
- Charts & Analytics
- Dashboards
- Data Marts



## Customer Relationship Management

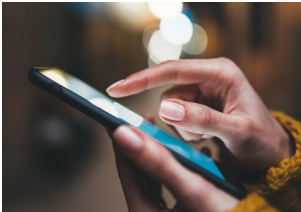
- Desktop CRM
- Mobile CRM
- Lead & Contact Management
- Sales & Order Tracking



# SINGLE CALL

## FOR ALL SUPPORT

**SOFTWARE. HARDWARE. CONNECTIVITY.**



**Cloud Solutions & On  
Premise Hardware**

**Data Conversion**

**Disaster Recovery &  
Business Continuity**

**Training & Conference  
Room Pilot**

**Consultation & Analysis**

**Software Support Services**

**Customization &  
Systems Integration**

**Upgrades &  
Enhancements**

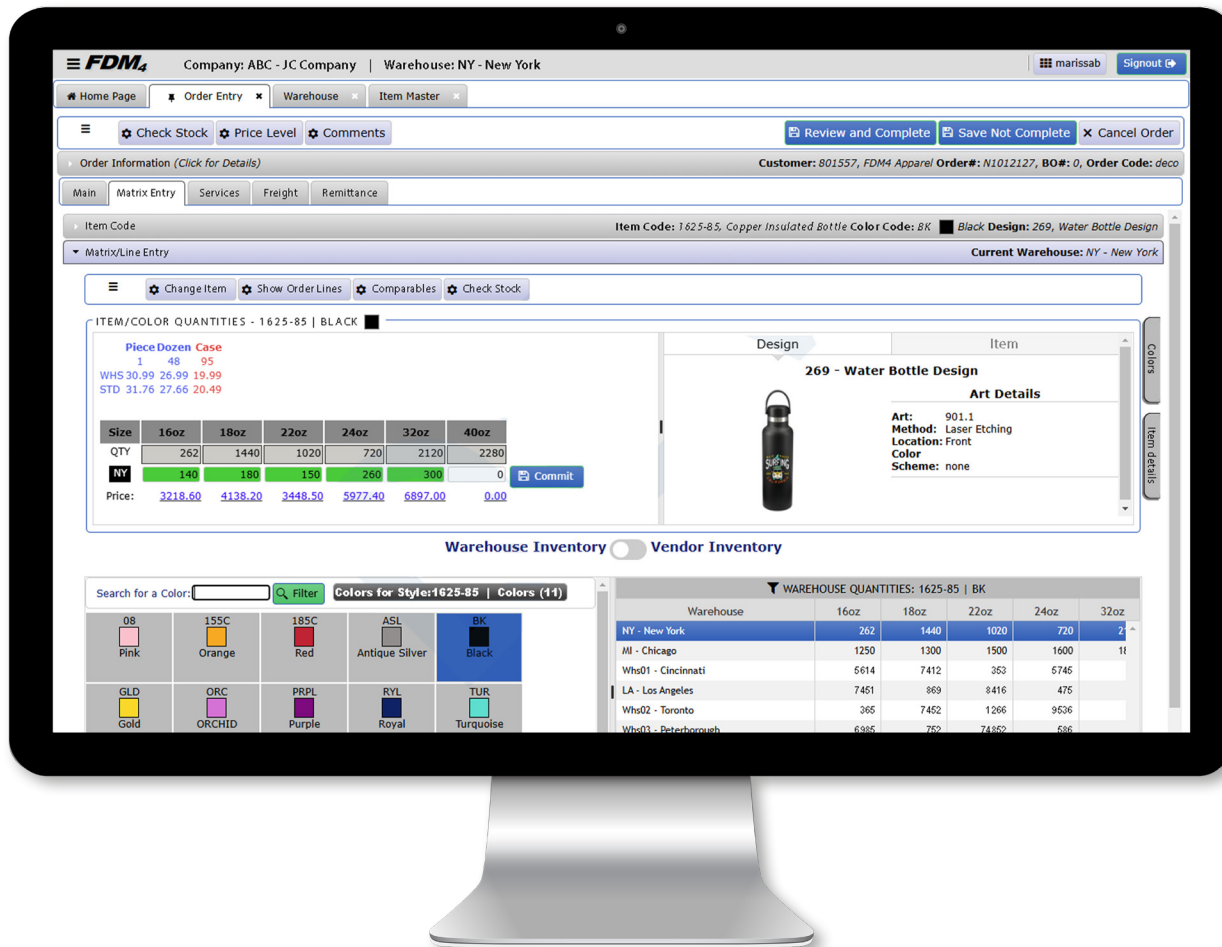


# ERP INTEGRATED INDUSTRY SOFTWARE

**SAVES YOU TIME AND MONEY**

FDM4 develops scalable software solutions for apparel enterprises, supporting multi-company, multi-currency, and multi-warehouse operations. Our industry-specific ERP software is tailored to meet the unique needs of the apparel sector. It includes an apparel order entry system optimized for style, color, and size.

**Industry Specific Solutions | Software Developer - Not a reseller | 45+ Years of Experience**



## STEP 1

Buy License  
or SaaS

## STEP 2

Buy or Lease  
the Hardware

## STEP 3

On Premise or  
in the Cloud

**Order Entry.** Two forms of Order Entry. Standard Order Entry is designed for single line entry of items with a single size and color. Matrix Order Entry is designed with a matrix grid for rapid entry of items with multiple sizes and colors.



**ERP User Homepage.** Users have the ability to create an homepage in the ERP with application shortcuts, favorite contacts and activity dashboards.

**Forecast Manager.** The screen will display the historical data at the style level in a single warehouse location, for a current year and previous years, with drill downs to color and size.

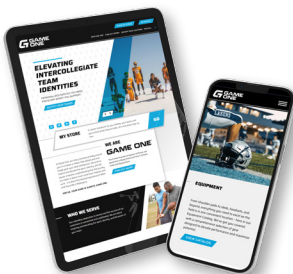


## ERP MODULES Improve Efficiency and Profitability

Order Processing and Fulfillment  
Customer Service Solution  
EDI/EASI & Promo Standards  
Credit Card Processing  
Inventory Control  
Intelligent Allocations  
Forecast Replenishment  
Purchasing and ASNs

Returns and Claims  
General Ledger, A/R, A/P  
Multi-company consolidation  
Sales Analysis, Vendor Analysis  
Warehouse Transfers  
Integrated Fax/E-mail  
Executive Dashboard

## VISIT OUR FDM4 USER SITES



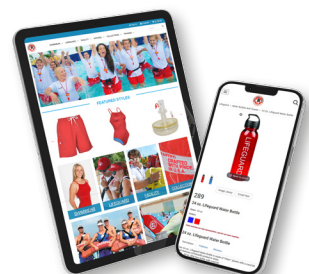
**game-one.com**

ERP, B2B, WMS, DECO



**pcna.com**

ERP, WMS, DECO



**watersafety.com**

ERP, B2B, WMS

# WAREHOUSE MANAGEMENT SOFTWARE

**MAKING EVERY STEP COUNT**

WMS manages the entire supply chain, from procurement to shipping, regardless of inventory type or distribution model. With comprehensive productivity reporting and detailed transaction auditing at every stage, it ensures optimal utilization of all your resources—people, inventory, equipment, and space.

**Mapping Manager.** Intelligent build of pallet's to increase efficiency in receiving and put away.

**Enhanced Customer Service.** Uninterrupted visibility of inventory and order status.

**Powerful Flexibility Out Of The Box.** With manager-configurable business rules to enforce organizational policies and industry best practices.

**Pick to tote**

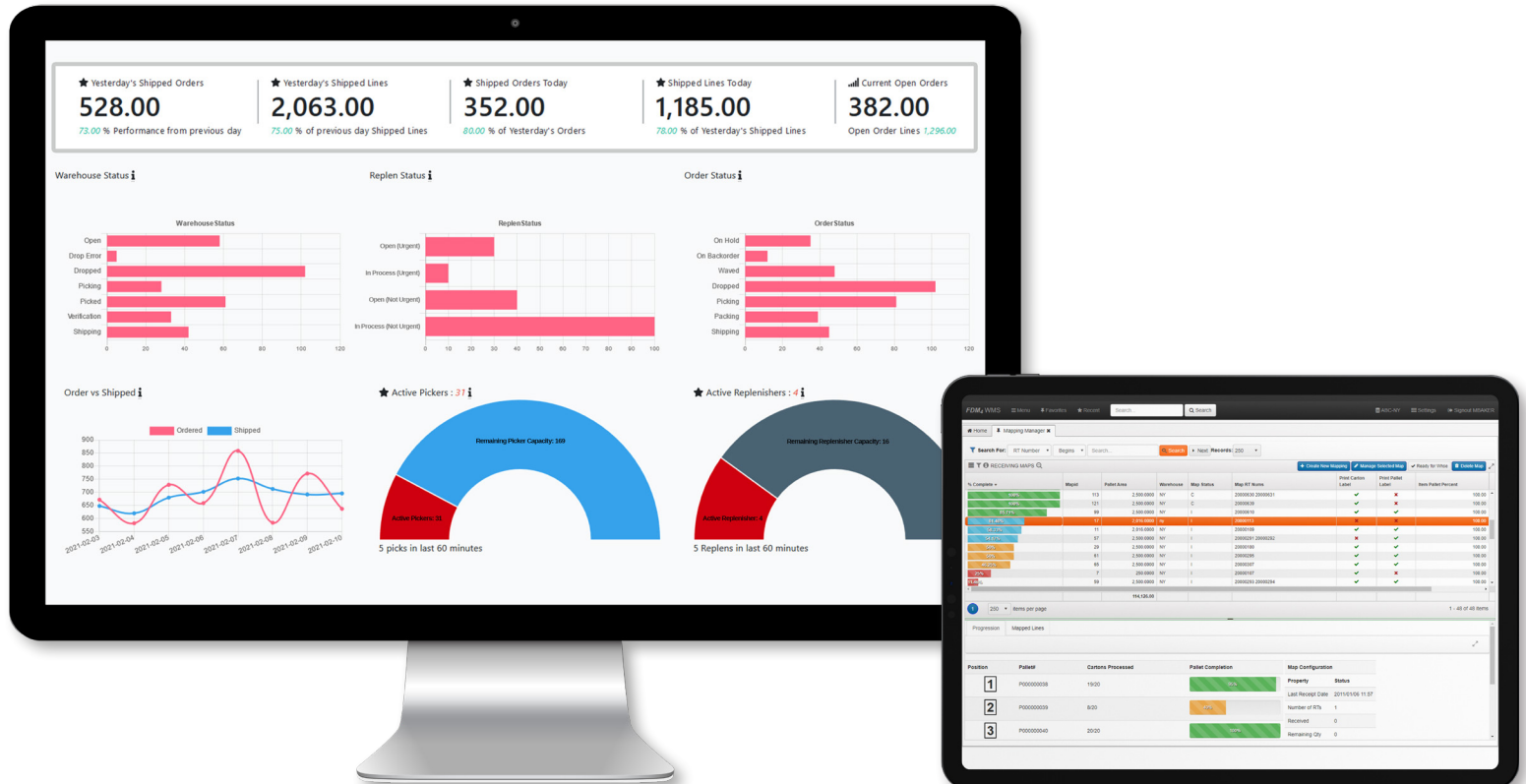
**Pick to pack**

**Pick to pass/zone-picking**

**Pick to carton ID/label**

**Multi-order cart pick**

**Bulk/case picking**

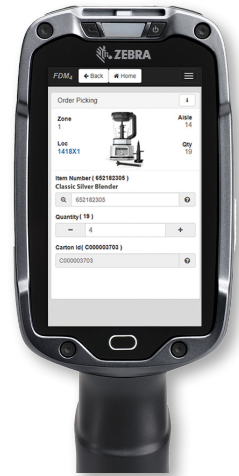
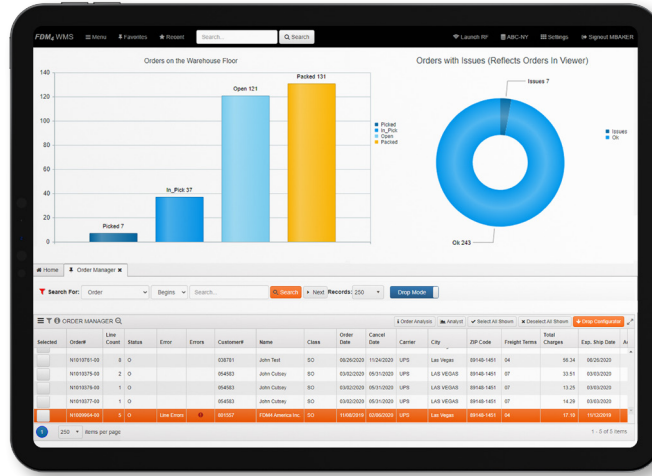


**Achieve 99% Inventory Accuracy.** With real time tracking via RF scanning and intelligent automation for cycle counts.

**Rapid, Accurate Order Fulfillment.** Whether you prefer paper-based, RF unit, or automated voice system, you choose the picking assignment.

**Maximize Your Warehouse Space.** Using the bin hit report, inventory is segregated according to ABC analysis and other user-defined rules – improving productivity and decreasing inventory holding costs.

**Faster Stock Turnover.** Create a just-in-time environment – with both triggered and on-demand replenishment, ASNs, planned and unplanned receiving, cross-docking, and directed and non-directed put-away.

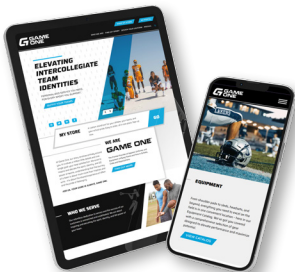


## WMS MODULES Increase Inventory Accuracy to 99%

Paper, RF Unit, and Automated Voice  
Picking Systems  
Pre-Receipt Put-Away Planning  
Receiving and Put-Away  
Replenishment  
Picking and Packing Orders  
Multiple Shipping and Returns  
Cycle Counts

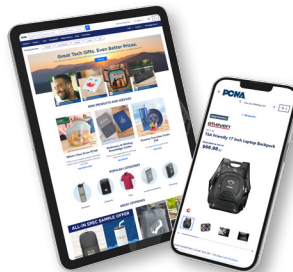
Physical Inventory Options  
Reporting and Analytics  
Work Center Management  
Labor Management  
Fill Rate Analysis  
Location Consolidation  
Dashboards

## VISIT OUR FDM4 USER SITES



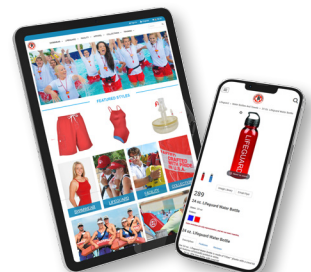
**game-one.com**

ERP, B2B, WMS, DECO



**pcna.com**

ERP, WMS, DECO



**watersafety.com**

ERP, B2B, B2C, WMS



# ECOM INCREASE ONLINE SALES

## ENHANCE SELF-SERVICES

Utilize the Internet as a global platform for sales and service delivery, accessible to your customers anytime, 24/7. This approach offers significant advantages, including streamlined back-office operations, improved customer service, and increased sales revenue.

**Responsive Product Page Templates.** Ensure that your site looks and works great regardless of which devices your customers use all managed via one set of data and code eliminating the need for separate mobile sites. Page specific template properties.

**An Enjoyable Shopping Experience.** In-page editing, multiple publication launches, auto image creation via single high resolution image, Multi-language support, Catalog Management with drag and drop, Catalog Browsing with filters including color.

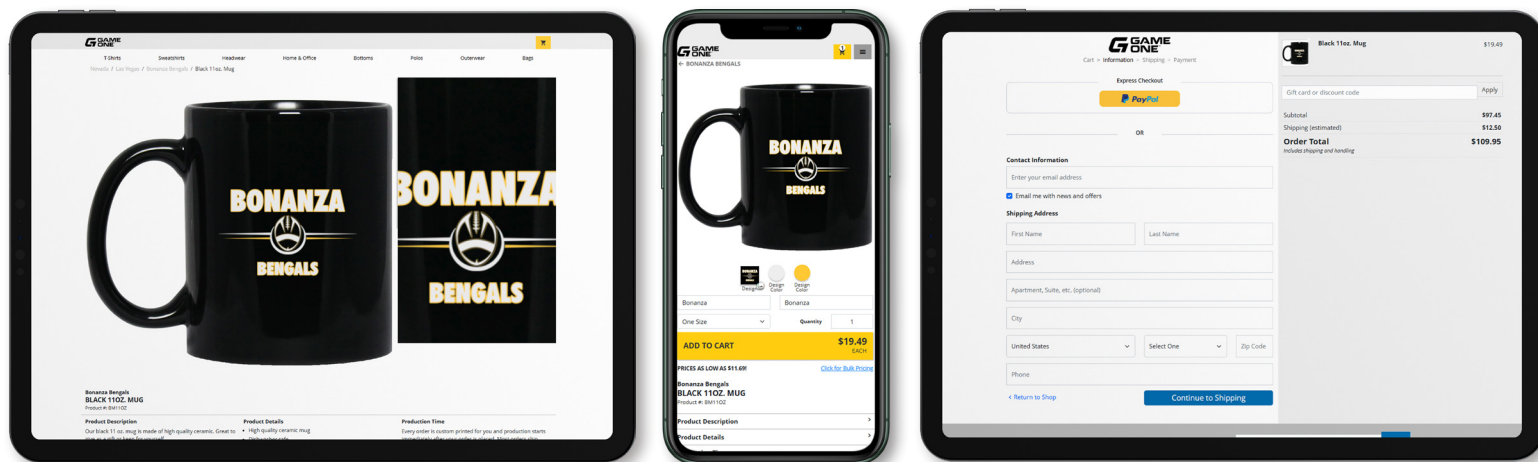
**Search Engine Optimization.** Dynamic load balancing in a multi-tier environment enables sub-second transaction processing and supports thousands of users during peak loads.



**Fully Integrates With Your ERP Solution.** Seamless communication between both systems provides real-time information about to stock availability, pricing, order and delivery status, with powerful account management tools.

**Customer Specific Catalog and Pricing.** Create customer-specific product catalogs and set personalized pricing with options for volume discounts, offers, coupons, and gift cards.

**Smooth and Secure Checkout Process.** Real-time shipping rates from: UPS, FedEx, USPS. Flexible payments options; PayPal, Credit Card with PCI-compliance, ACH (automated clearing house) and credit terms. Email notifications of orders and shipments.

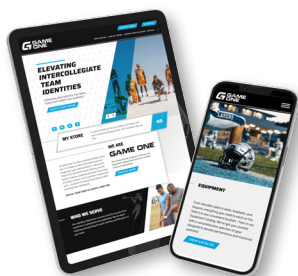


## ECOM MODULES Enhance Service and Increase Sales

Consumer and Business sites  
Content Management & Site Builder  
Catalog Management  
Templates and Responsive Design  
Multi-Lingual  
Search Engine Optimization  
Marketing, Promotional &  
Conversion Tools  
Shop by price, feature, bestsellers  
Promos, Gift Certificates, Wish Lists  
Multiple payment methods

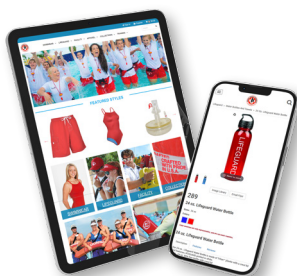
Cross and up -sell with product companions and comparables  
Secure PCI-compliant shopping  
Auto freight calculation  
Order confirmation email  
Track order status, carrier delivery  
Real-time inventory by warehouse  
B2B quick matrix order entry and custom pricing  
My Account Self-Serve Features

## VISIT OUR FDM4 USER SITES



**game-one.com**

ERP, B2C, WMS



**watersafety.com**

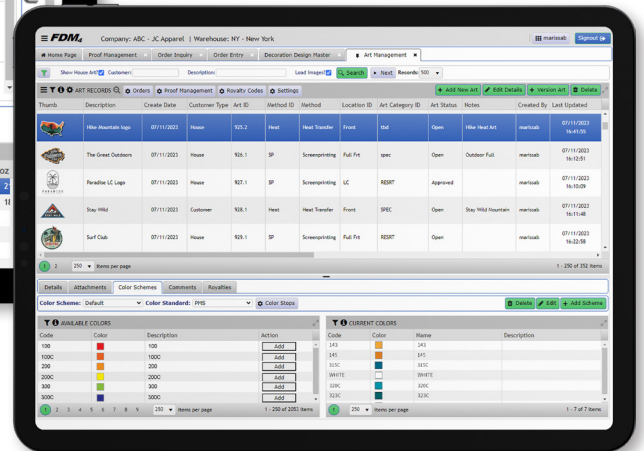
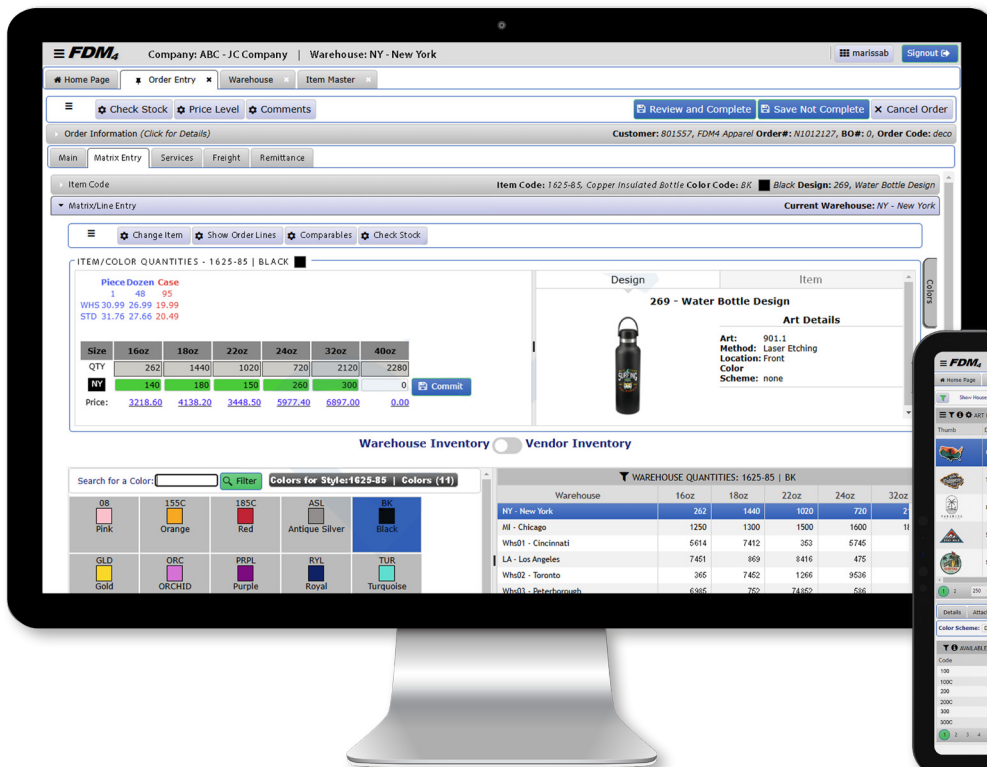
ERP, B2B, B2C, WMS

# DECORATION

## ENTRY AND MANAGEMENT

The Decoration Module, integrated with ERP, streamlines orders for Decorated Apparel and Promotional Products. It supports workflows involving internal stock, third-party vendors, in-house embellishments, or outsourcing. The solution is customizable to fit your business model.

**Order Plus Decoration, All From a Single Solution.** Providing the flexibility of style-based order entry with decoration, manage details from proofing, providing spec samples managing royalties, and end to end production planning and routing, all from order entry. From order entry, drag and drop a customer supplied DST File and the system automatically reads the DST header and imports dimensions and stitch count into the art details allowing for rapid order fulfillment.



**Art Record Management.** Store your library of art and design records which can be modified and versioned and reused across multiple decoration techniques. Manage files and details as the order flows through the proofing and digitizing processes and access files and details easily and conveniently during the production process.



## JC.APPAREL

## DECORATION INVOICE

INVOICE: 10002668\_WHSE.ny


<b>PLEASE REMIT TO:</b> JC Apparel 1385 Broadway New York NY 10018 US	<b>BILL TO:</b> FDM4 Apparel 9205 W Russell RD STE 335 Las Vegas NV 89148-1451 US	<b>SHIP TO:</b> ATTN: FDM4 Apparel 9205 W Russell RD STE 335 Las Vegas NV 89148-1451 US
--------------------------------------------------------------------------------	-----------------------------------------------------------------------------------------------	--------------------------------------------------------------------------------------------------------

Purchase Order #	Order#	Invoice Date:	Invoice Due Date:	Customer #	Ordered By:	Terms:	Ship Via:
5677035	N1012125-00	2023-07-13	2023-08-12	801557	Michael Cutsey	Net 30 Days	UPS Ground

ID: 297  
Hike USA Tee



Art	Art ID Version	Method	Location	Color Scheme
	925.4	Screenprinting	Front	Default

Style Color	Item	Description	Qty Ordered	Qty Shipped	Qty B/O	Price	UOM	Total Price
	652182303	2000 GD Tee Black S	24	24	0	8.27	EA	198.36
	652182304	2000 GD Tee Black M	18	18	0	7.64	EA	137.52
	652182305	2000 GD Tee Black L	16	16	0	7.64	EA	122.24
	652182306	2000 GD Tee Black XL	12	12	0	7.64	EA	91.68

Shipped From:  
Carrier:  
Carton No:  
CO00004799

JC Apparel - ny  
ups ground  
Tracking No.  
N101212500C000004799

Sub Total	549.80
misc fee	0.00
State Tax	0.00
Country Tax	0.00
Freight	64.18
Invoice Total	613.98
Total Remitted	0.00
Please Pay	613.98

## JC.APPAREL

## DECORATION PROOF

ORDER No	PROOF No	PROOF VERSION	ACCOUNT No	ORDER DATE
N1012125-0	301	1	801557	2023-07-13
Customer Name	Contact Name	Contact Phone#	Contact Email	Customer PO
FDM4 Apparel		(866) 676-3364		



Design ID: 297  
Design Description: Hike USA Tee  
Approval Needed By: 2023-07-14  
Style: 2000 (2000 GD Adult 100% Cot Tee)  
Color: 30 (Black)  
Size:



Art ID	925.4
Art Description:	Hike USA
Method:	Screenprinting
Location:	Front
Dimensions (WxH):	6.0000 x 5.2500
Square Dim.:	31.5000
Color Scheme:	Default



## Color Stops for Color Scheme: Default

Stop	Color	Color Code	Color Name	Color Description	Color Standard
0		143	143	Saffron	PMS
1		145	145	Orange Blossom	PMS
2		315C	315C	Deep Cyan	PMS
3		WHITE	WHITE	White	PMS
4		320C	320C	Medium Cyan	PMS
5		323C	323C	Blue Stone	PMS
6		BASE	Base discharge	Base	PMS
7		Black 6	Black 6	Black	PMS

Approve Reject

## JC.APPAREL

## DECORATION PURCHASE ORDER

\* ORIGINAL ORDER \*

<b>VENDOR:</b> XYZ Decorator 100 Lakeside Dr Beverly Hills, CA 90210  ATTN: Marissa Burgess PHONE: 310-806-4679 FAX: 310-755-6200	<b>BILL TO:</b> JC Apparel 1385 Broadway New York NY 10018  ATTN: Mike Cutsey PHONE: 212-947-8955 FAX: 705-474-6632	<b>SHIP TO:</b> FDM4 America Inc. 9205 W Russell RD STE 335 Las Vegas, NV 89148-1451  ATTN: John Smith PHONE: 866-894-3698 FAX: 866-474-9014
--------------------------------------------------------------------------------------------------------------------------------------------------------	------------------------------------------------------------------------------------------------------------------------------------------	-------------------------------------------------------------------------------------------------------------------------------------------------------------------







PURCHASE ORDER	ORDER DATE	DATE RECEIVED	SHIP VIA	BUYER ID	CUST ORDER NO.	CUST PO NO.	TERMS
H5677031	2023-07-13	2023-07-13	UPS GROUND	marissa	H1012127-00	5677035	Net 30 Days

Design ID: 297 Hike USA Tee Re-Order? No  
Art ID: 925.4 Hike USA Sample Type: None  
Method: Screenprinting Location: Front  
Dimensions (WxH): 6.0000 x 5.2500 Square Dim.: 31.50  
Archive Loc.:  
Art File:



LINE #	QTY	UOM	ITEM	DESCRIPTION	PRICE	AMOUNT
1	24	EA	652182303	2000 GD Tee Black S	4.5000	108.00
2	18	EA	652182304	2000 GD Tee Black M	4.5000	72.00
3	16	EA	652182305	2000 GD Tee Black L	4.5000	81.00
4	12	EA	652182306	2000 GD Tee Black XL	4.5000	54.00
TOTALS:	70	-	-	-	-	315.00

## Color Stops for Art 925.4 Color Scheme: Default

0		143	143	Saffron	PMS
1		145	145	Orange Blossom	PMS
2		315C	315C	Deep Cyan	PMS
3		WHITE	WHITE	White	PMS
4		320C	320C	Medium Cyan	PMS
5		323C	323C	Blue Stone	PMS
6		BASE	Base discharge	Base	PMS
7		Black 6	Black 6	Black	PMS

## JC.APPAREL

## DECORATION WORK ORDER

PRODUCTION# 15001069 STEP# 20100

WORK ORDER# 18000610



Name	Customer	Cust P/O	Order	Order Date	Planned Ship Date	Destination	Carrier
marissab	801557 FDM4 Apparel		N1012124.0	2023-07-20	2023-07-24	US	ups ground

Design ID: 297 Hike USA Tee Re-Order? Yes  
Art ID: 925.4 Hike USA Sample Type: None  
Method: Screenprinting Location: Front  
Dimensions (WxH): 6.0000 x 5.2500 Square Dim.: 31.50  
Archive Loc.:  
Art File:



Style	Color	Size	Quantity
2000 - 2000 GD Adult 100% Cot Tee	30 - Black	S	24
2000 - 2000 GD Adult 100% Cot Tee	30 - Black	M	16
2000 - 2000 GD Adult 100% Cot Tee	30 - Black	L	18
2000 - 2000 GD Adult 100% Cot Tee	30 - Black	XL	12
Total:			70

## Color Stops for Color Scheme: Default

Stop	Color	Color Code	Color Name	Color Description	Color Standard
0		143	143	Saffron	PMS
1		145	145	Orange Blossom	PMS
2		315C	315C	Deep Cyan	PMS
3		WHITE	WHITE	White	PMS
4		320C	320C	Medium Cyan	PMS
5		323C	323C	Blue Stone	PMS
6		BASE	Base discharge	Base	PMS
7		Black 6	Black 6	Black	PMS

STEP ONE

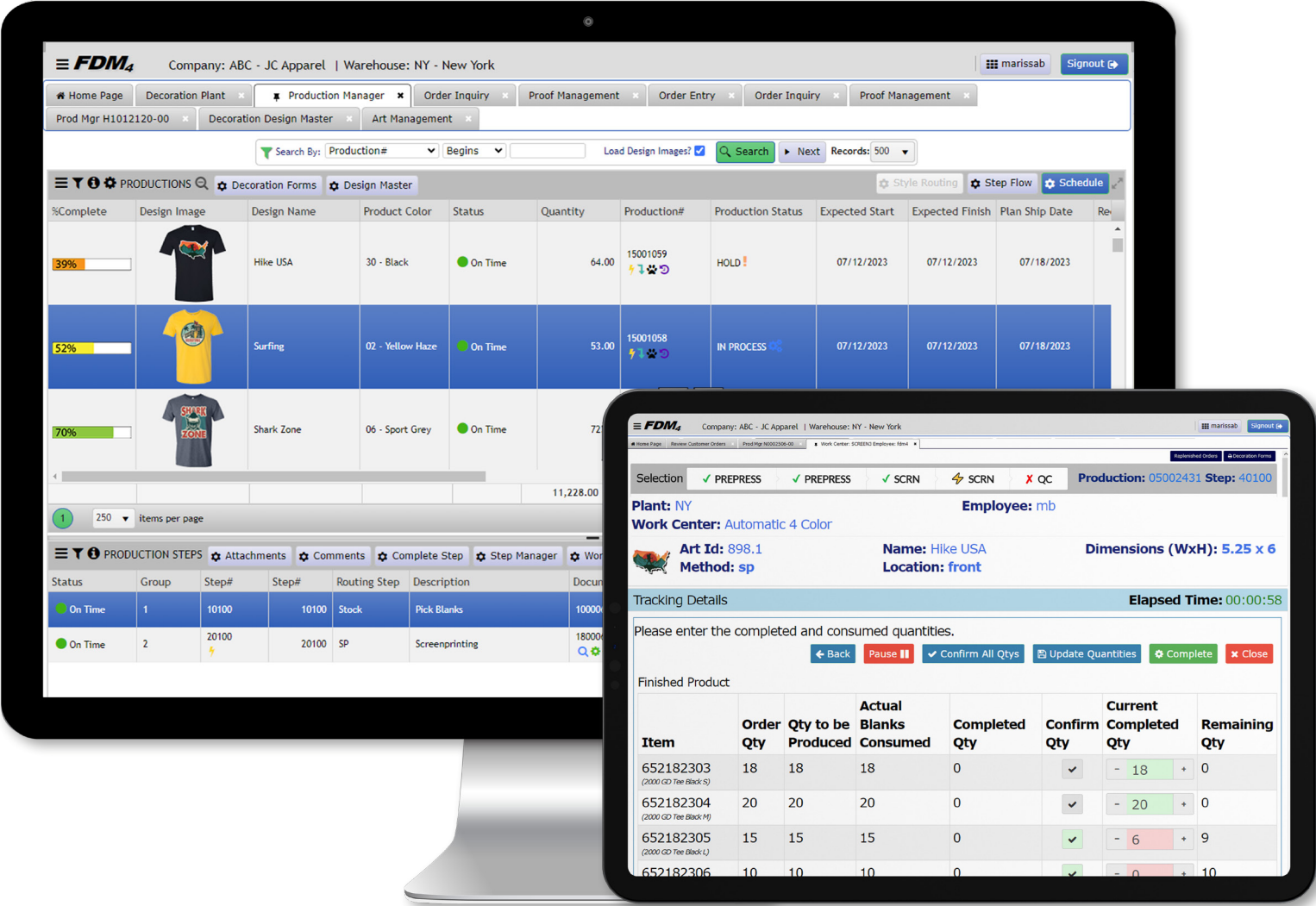
STEP TWO

STEP THREE - OPTION 1

STEP THREE - OPTION 2

**Intuitive “Decoration Charge” Pricing.** Pricing and cost calculations can be defined using multiple criteria, including stitch count, dimensions and colors across varying types of charges and costs such as digitizing, setup, decoration runs, incremental run charges and minimum order quantity surcharge.

**Automatic Status Updates.** Separate management procedures for artwork, decoration proofs, and production orders provide the tools required as decoration orders pass through the various departments. Integration to the ERP ensures that all decoration orders can be tracked in real time in the back office or FDM4 B2B.



**In-House or Third Party.** Multiple orders can be sent along with digitized files, to multiple external decoration vendors or internal decoration workstations, to complete all of the embellishments. Visibility to anticipated vendor costs and transit times with highlighted best cost or best time option for quick selection.

**FDM4 Vender Portal.** FDM4’s Decoration Portal allows third-party decorators to access and share key information pertaining to any of your outsourced decoration work. From acknowledging the receipt of blank goods, accessing work orders and art assets, to notifying you of when the work has been completed and shipped. FDM4’s Decoration Portal breaks down the walls between you and your third-party decoration vendors, providing seamless service.

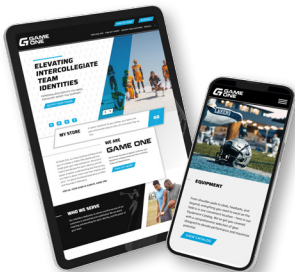
**Simplify Production.** Automated creation of bill of materials and product routing, real-time production scheduling and planning. Manage plant and work center operating times, operation capacities and scheduling rules.

**Proof Management Processes.** An integrated proof management process allows you to manage and track each step of the proof and sample approval, right from storyboarding. Eliminating any communication gaps along the decoration order workflow.

The monitor displays the FDM4 software interface. The top bar shows 'Company: ABC - JC Apparel | Warehouse: NY - New York'. Below this, there's a navigation menu with 'Home Page' and 'Master Production Schedule (MPS)'. The main area shows a 'Schedule' tab with a table of production orders. The table has columns for Date, Time, Duration, On Time, Customer, Order, Operation, Trans Type, Plant, Work Center, Product, Qty, Production, Step Status, Art, and Sched Status. The data shows orders for January 10th and 13th, 2020, with various operations like Embroidery, Screenprinting, and Purchase Order. To the right, a tablet displays a 'DECORATION WORK ORDER' for 'JC.APPAREL'. It includes a barcode, a table of production orders, and a color chart with 7 color swatches.

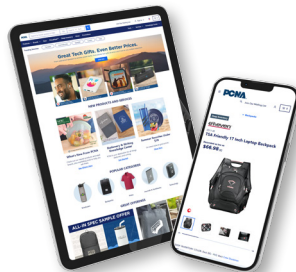
**FDM4 Decoration Module.** FDM4 offers software solutions tailored to the Uniform Industry, Team Sports, Apparel Decoration and Promotional Products. Whether you are decorating products for stock decoration or on-demand orders, FDM4 has solutions for your specific needs.

**VISIT OUR FDM4 USER SITES**



**game-one.com**

ERP, B2B, WMS, DECO



**pcna.com**

ERP, WMS, DECO

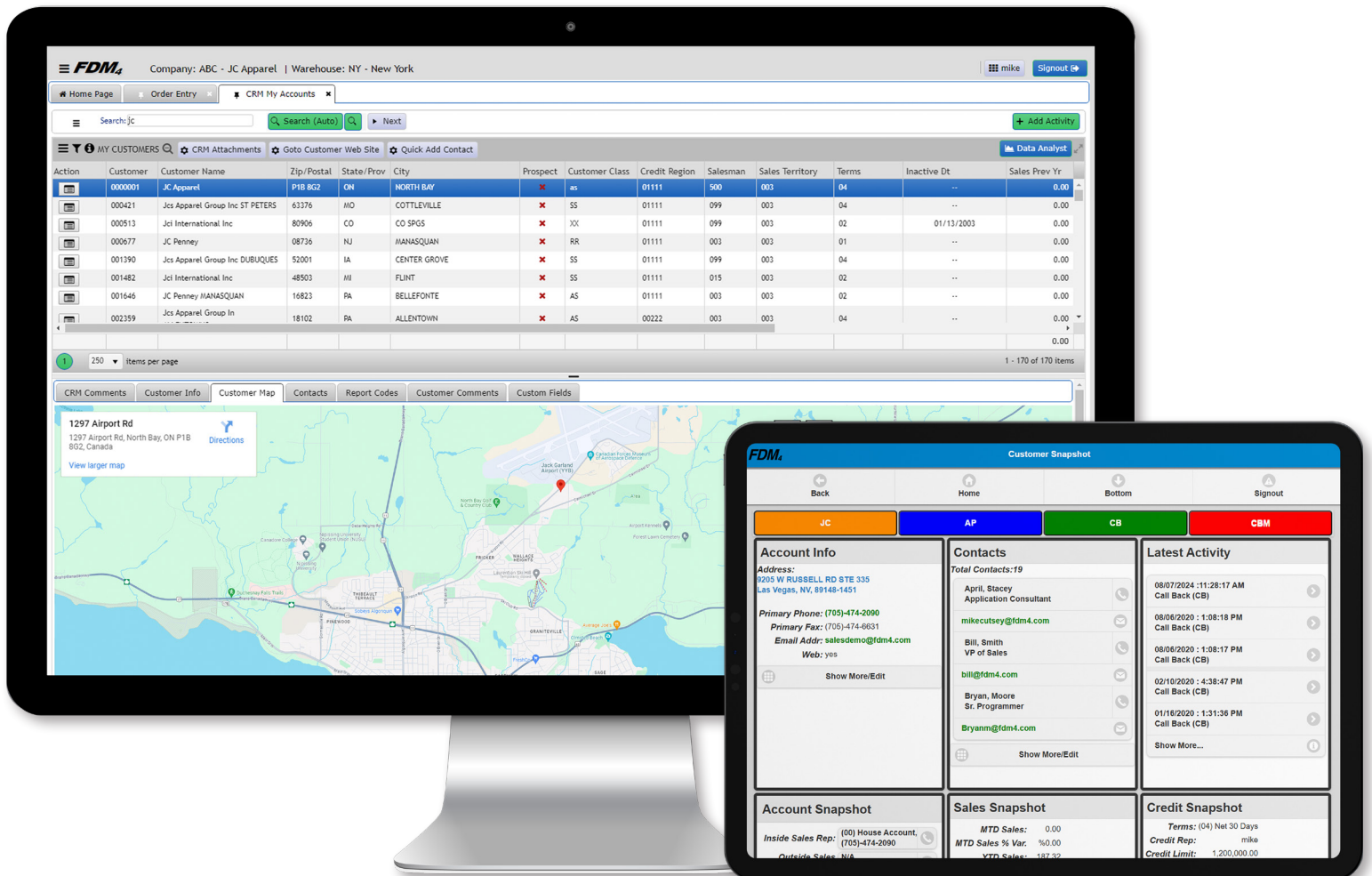


# CRM IMPROVE SALES PRODUCTIVITY

## CUSTOMER SERVICE & PROFITABILITY

The CRM module, integrated with ERP, provides sales reps with real-time sales and customer data, simplifying order placement and customer acquisition. It ensures that any changes to customer information are instantly updated in the master database. This integration enhances efficiency and accuracy.

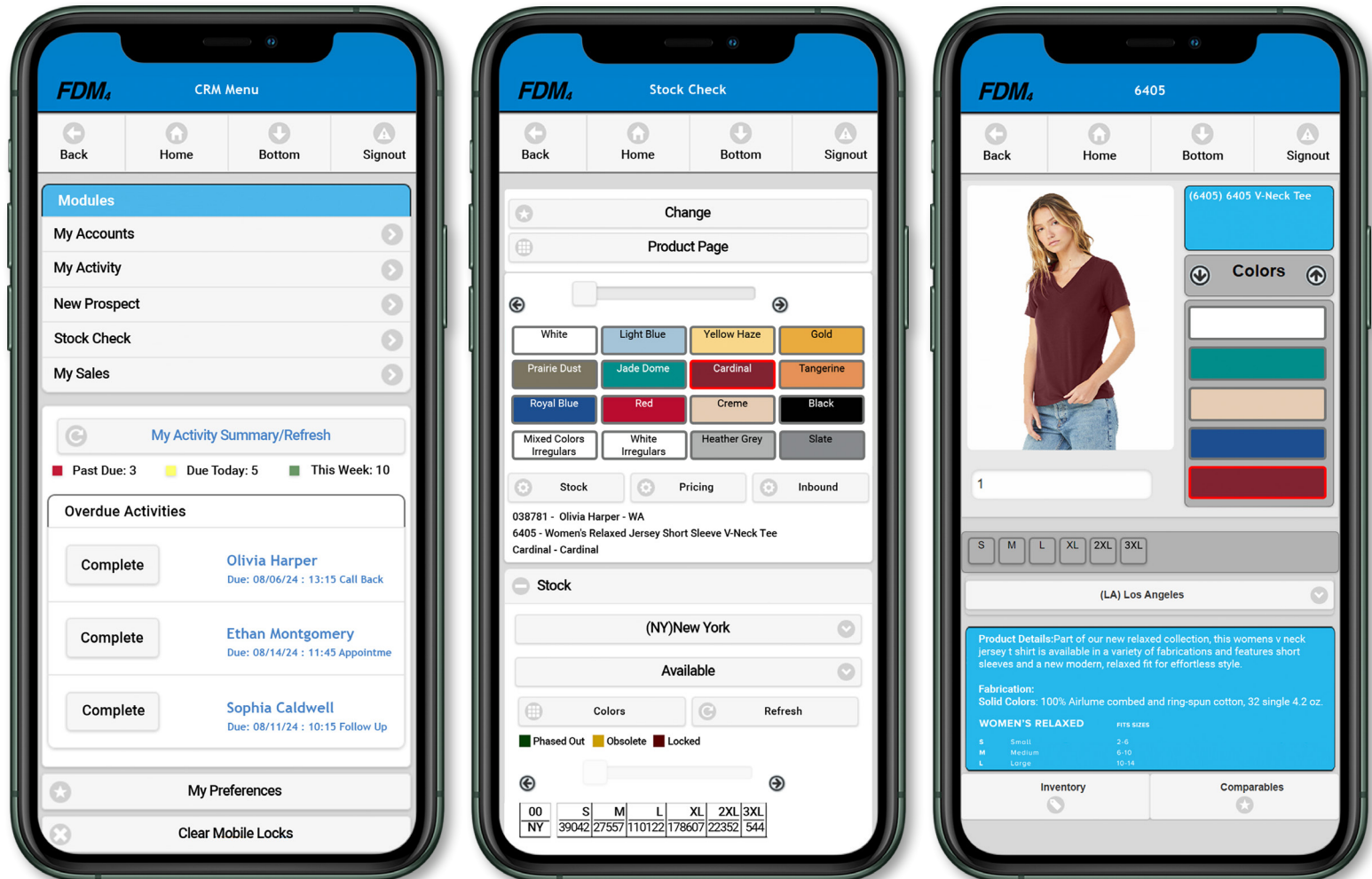
**Consistent, Automatic CRM Business Processes Benefit the Whole Team.** FDM4 CRM provides the tools to help you increase sales and productivity including drill down of credit, summary of sales, and drop ship sales; plus, rolling twelve months total sales, pieces, dozens, average days to pay, average invoice, credit limit and terms, and more.



**Convenient Mobile Access.** Instant access via web browser to place orders, view order status, order history, real-time accounts receivable, credit terms, and activity management.

- Built-in security and permissions to support access and ownership
- Import/Export Utility
- Track customer communication – frequency and content
- Custom fields allow you to create unique client criteria for reporting and marketing

**Oversee All CRM Activity on the System.** Supervisors can view all activities assigned to each CRM user and can reassign activities for those who are absent from work.

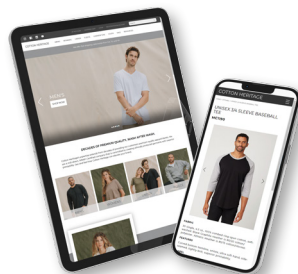


**VISIT OUR FDM4 USER SITES**



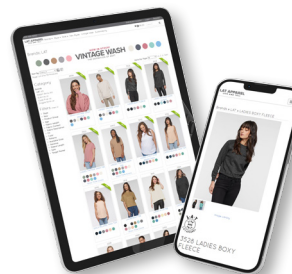
**usabayside.com**

ERP, B2B, CRM, WMS



**cottonheritage.com**

ERP, B2B, CRM, WMS



**latapparel.com**

ERP, B2B, CRM, WMS



**wpsportswear.com**

ERP, B2B, CRM

# VENDOR PORTAL

## END-TO-END SUPPLY MANAGEMENT

Connect anywhere at any time. Vendor Portal is a browser based tool that improves communication and streamlined workflows between your corporate office and suppliers and manufacturers through a secured portal.

**Streamlined the Supply Chain Process.** External users can review PO's and create ASN's mapped to PO's. Labels will be printed for each style/color/size including SSCC-18/LPN numbers with individual SKU's GTIN/UPC codes.

**Building Container for Shipment.** A remote device running a browser will scan carton IDs to build a container/ASN.

FDM<sub>4</sub>

Back Home

ASN Maintenance

ASN Number: A1000689

Carton(s) Qty: 5

Boarding Date: 2025-07-29

BOL#: 4564897987

Cmcl Inv #: 56441188

Destination City: Long Beach

Shipping Date: 2025-07-30

Vessel Name: ORCA

Internal Ref #:

Origin City: Shanghai

Add Cartons

Save

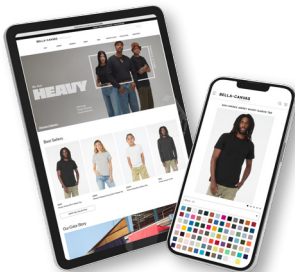
Complete

Cancel ASN

Carton ID	Qty
00001234560000167964	24
00001234560000167971	12
00001234560000167988	24
00001234560000167995	12
00001234560000168008	72

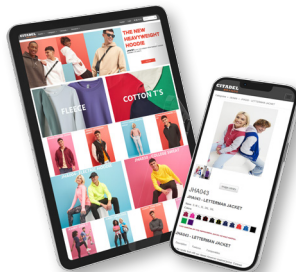
MANUFACTURER Color Image TEST	COUNTRY CN	STYLE 3001	MANUFACTURER Color Image TEST	COUNTRY CN
COLOR DESCRIPTION WHITE		COLOR CODE 00	COLOR DESCRIPTION WHITE	
GTIN AND QTY	SIZE XS		GTIN AND QTY	
SSCC-18		QUANTITY 72 EA	SSCC-18	
LOT: 073205182015		LOT: 073205182015		
BRAND: Canvas		BRAND: Canvas		
ITEM#: 3001001		ITEM#: 3001001		
PO#: 5583		PO#: 5583		
Vendor#: AB3		Vendor#: AB3		

## VISIT OUR FDM4 USER SITES



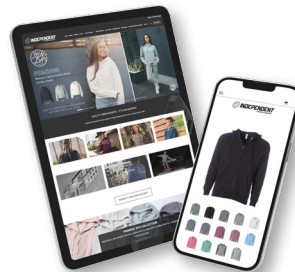
**bellacanvas.com**

ERP, B2B, WMS, MFG, VP



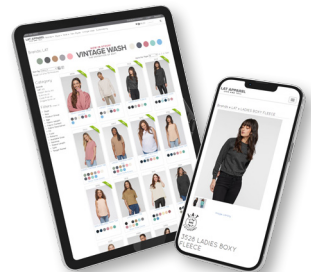
**citadelbrands.com**

ERP, B2B, WMS, VP



**independenttradingco.com**

ERP, B2B, CRM, WMS, VP



**latapparel.com**

ERP, B2B, CRM, WMS, VP



# DECORATION

## SHOWCASE



# DISTRIBUTOR

## SHOWCASE

HAWAII ★ BASED  
**AMERICAN**  
T-SHIRT COMPANY  
★ EST. 1977 ★



**BELLA+CANVAS**



**century place**  
APPAREL



**RGRILEY.com**



**SUN**APPAREL

**TRIMARK**

**WASATCH**

# MANUFACTURER

## SHOWCASE

**alo**

 **BAYSIDE**  
THE TRUE AMERICAN MADE TEE™

**BTSA<sup>LA</sup>**

**century place**  
APPAREL

  
**CHARLES RIVER**  
APPAREL™

 **Circle**  
CLOTHING

  
**COTTON**  
HERITAGE

 **INDEPENDENT**  
TRADING COMPANY

  
**J•AMERICA**

 **LANE SEVEN**

**LAT APPAREL**

**LOS**  
**ANGELES**  
**APPAREL**

  
**OMN**  
APPARATECH

 **PTIMA**

  
**premium**  
uniforms

 **Royalapparel**™

  
**SMART**  
—BLANKS—



**Whispering Pines**  
sportswear

 **ZUNI**  
SPORTSWEAR





**FDM4 AMERICA INC.**



**FDM4 INTERNATIONAL INC.**

***FDM<sub>4</sub>***  
ERP WMS ECOM DECO

# SOFTWARE

## TO GROW YOUR BUSINESS

### **SIMPLE. SMART. SECURE.**

For over 45 years FDM4 has been a leading provider of business solutions, including integrated ERP, Decoration Management, Warehouse Management (WMS), E-commerce (B2B, B2C, and Online Stores), and Customer Relationship Management (CRM).

Our powerful, scalable software delivers user-friendly, industry-specific applications tailored to the needs of Distributors, Decorators, and Manufacturers across a range of sectors — including branded apparel, promotional products, uniforms, team sports, accessories, and consumer goods.

---

**FDM4 AMERICA INC.**

9205 West Russell Road, Suite 335  
Las Vegas, NV 89148

**Telephone:**

866.676.3364

**Website:**

[www.fdm4.com](http://www.fdm4.com)

**E-mail:**

[askus@fdm4.com](mailto:askus@fdm4.com)

**FDM4 INTERNATIONAL INC.**

1297 Airport Road, North Bay  
ON Canada, P1B 8G2