



FDM4 Enterprise Solutions Warehouse Management System

Maximize profits and transform your warehouse

This user-friendly software improves inventory accuracy level to 99 percent, increases order throughput, and provides access to detailed productivity reports. FDM4 WMS is specifically designed with a bin consolidation feature to maximize warehouse space. Automatic rules-based cycle counting completely eliminates the need for physical inventories.

Increase your inventory accuracy to 99 percent. Real-time tracking via radio frequency units allows for continual product traceability – from receiving to the shipping dock. Products can be managed at a granular level through lot control and serialization, dynamic slotting and location consolidation, FIFO/FEFO/LIFO stock rotation, and kitting and assembly.

Maximize your warehouse space. Optimize square footage with bin sequence or serpentine layout. Available space is increased when items are more efficiently located in relation to receiving, assembly, packing and shipping points. Using the *bin hit report*, inventory is segregated according to ABC analysis and other user-defined rules – improving productivity and decreasing inventory holding costs.

Rapid, accurate order fulfillment. Whether you prefer paper-based, RF unit, or automated voice system, you choose the picking assignment – to one or to many – that ensures maximum throughput for your orders.

- Pick to tote
- Pick to pass/zone-picking
- Multi-order cart pick
- Pick to pack
- Pick to carton ID/label
- Bulk/case picking

Faster stock turnover. Create a *just-in-time* environment – reducing the need for safety stock, increasing inventory turnover, and freeing up your working capital. Your FDM4 system supports both triggered and on-demand replenishment, ASNs, pre-receipt visibility, planned and unplanned receiving via RF units, cross-docking, and both directed and non-directed stock put-away.

Streamline cycle counting. FDM4 captures relevant data such as specific stock locations and frequency of movement to systematically schedule personnel for cycle counts. This improves the accuracy of inventory records for planning purposes, and eliminates the need for costly physical inventories.

Powerful functionality out of the box. Manager-configurable business rules control *system-validated* picking, packing and shipping, and enjoy built-in quality assurance to guarantee all orders are error-free. This flexible solution allows for on-demand and scheduled order release, pre-release review, and fill rate analysis.

Enhanced customer service. With uninterrupted visibility of inventory, orders, and employee resources, customer service reps can more accurately determine product availability and realistic delivery dates. Continuous order and work status monitoring ensures your clients receive consistent, accurate information.

Return on investment. Maximize the utilization of *all* your resources – people, inventory, equipment and space – to improve the bottom line and ensure return on investment. Through comprehensive productivity reporting, FDM4 WMS provides you with a means to measure and manage work and resources, which increases process efficiency and improves productivity throughout the warehouse.

FDM4 WMS ALL-INTL 04282010

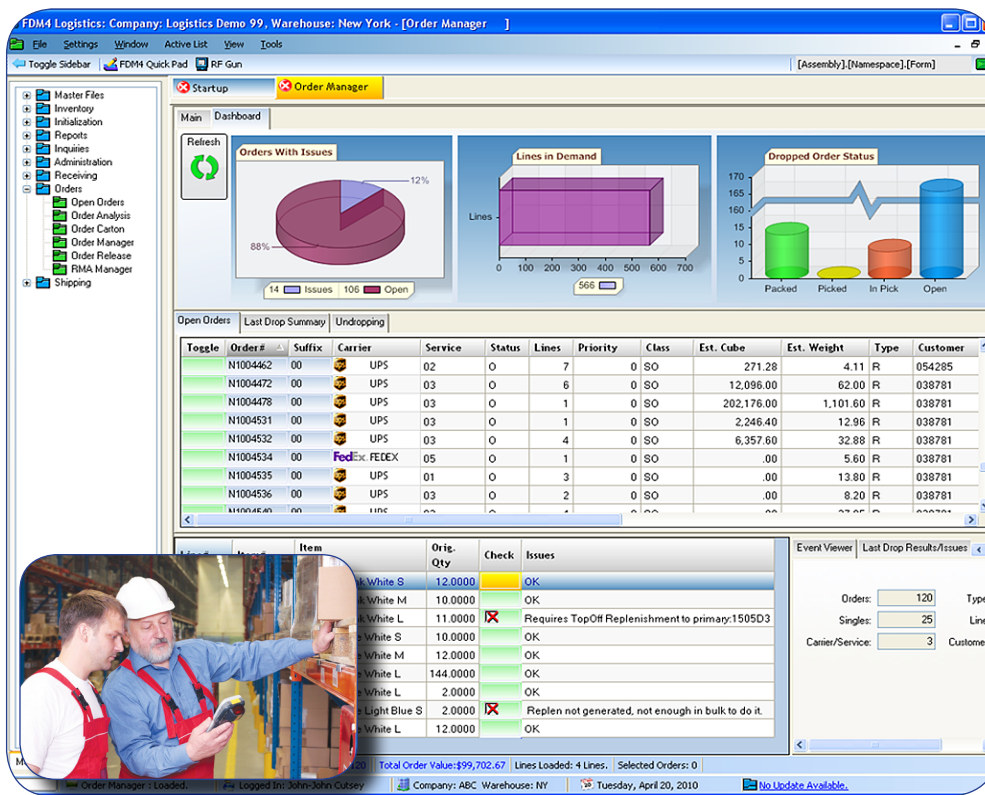
“The use of FDM4 has helped Broder reduce warehousing, inventory, and distribution costs. Broder now operates one of the most efficient distribution networks in the industry...with the ability to ship via ground parcel service to over 80% of the continental U.S. population within one business day and to over 98%...within two business days.

The WMS application has been modified to handle multi-branding in a single distribution center so Broder can further streamline distribution efficiency.”

*– Broder Case Study
by Progress Software*

*Established in 1978,
FDM4 specializes in the
design and implementation of
Enterprise Resource Planning,
Warehouse Management System,
and E-commerce software.*

FDM4
International Inc.



Visit FDM4 user websites

Bella (ERP, B2B and B2C E-commerce, WMS - 200,000 sq ft warehouse); **Broder Bros., Co.** (ERP, B2B, WMS - 17 warehouses - up to 750,000 sq ft); **Heritage Sportswear** (ERP, B2B, WMS - 140,000 sq ft warehouse); **MacPherson's** (ERP, B2B, WMS, - 3 warehouses 100,000 to 200,000 sq ft); **River's End** (ERP, B2B WMS - 100,000 sq ft warehouse); **Trimark Sportswear** (ERP, B2B/co-branded websites, WMS - 150,000 sq ft warehouse).

Achieve new heights of efficiency and profitability Increase inventory accuracy to 99%

Proven results from FDM4 warehouse management system give you a competitive advantage as it adapts to your company's specific needs, optimizing inventory levels and increasing order throughput.

- Paper, RF Unit, and Automated Voice Systems
- Pre-Receipt Put-Away Planning
- Receiving and Put-Away
- Replenishment
- Picking and Packing Options
- Multiple Shipping and Returns
- Cycle Counts
- Physical Inventory Option
- Reporting and Analytics
- Work Centre Management
- Labour Management
- Fill Rate Analysis
- Dynamic Slotting
- Location Consolidation
- Kitting and Assembly
- Warehouse Dashboard

Configured for your industry and highly adaptive to your operational needs

FDM4 WMS controls the supply chain from procurement through shipping, regardless of inventory type or distribution model.

With single and multi-site capabilities, FDM4 WMS applies dynamic user-configurable business rules to enforce organizational policies and industry best practices on the warehouse floor.

Controls are automated so detailed transaction auditing is possible at all points.



See it for yourself.
Please contact us today to schedule an online demonstration tailored to your requirements.
salesinfo@fdm4.com

Knowledge at your fingertips with extensive reporting tools including inbound, outbound, productivity, inventory, master files, and management.

Standard List of Inventory Reports

- Activity by Location
- Activity by Pallet
- Demand Items
- Discrepancy by Item Report
- Discrepancy by Location Report
- Duplicate Pallet
- Inventory (Non-Stock) by Item
- Inventory (Non-Stock) by Location
- Inventory by Location
- Inventory by Product Group
- Inventory by Status
- Inventory by Stock Number
- Inventory Consumption by Wave
- Inventory Customs Hold
- Inventory Customs Hold Summary
- Inventory Status - All
- Inventory Status - Low Stock
- Inventory Status - Over Stock
- Inventory Value by Location
- Item Activity
- Item Consolidation
- Item Deactivation
- Item Dimensions
- Item History by Item
- Item History by Stock Status
- Item History by Type
- Item History by Zone: Detail
- Item History by Zone: Summary
- Item History Discrepancies
- Item History Summary
- Item History: EOD Value
- Item Location History
- Item Physical Variance
- Item Serial Number
- Item Kit Items
- Item (Non-Stock)
- Item in Multiple Locations
- Item Out of Zone
- Item with Missing Data
- Item with No Dimensions
- Multiple Pallet Locations
- Over-Demand Items
- Pending Cycle Counts
- Pending Order Lines
- Pending Packing Activity
- Pending Put-Away Activity
- Pending Put-Away by Department
- Pending Receiving Activity
- Pending Replenishment by Item
- Pending Replenishment by Location
- Pending Shipping Activity
- Pending Staging Activity
- Physical Discrepancy by Item
- Physical Discrepancy by Location
- Physical Inventory Count
- Physical Inventory Detail: By Item
- Physical Inv. Detail: By Location
- Physical Inv. in Process: By Aisle
- Physical Inventory in Process: Detail
- Physical Inventory Item Statistics
- Physical Inventory Summary
- Physical Inv. Uncounted Locations
- Physical Transactions
- Primary Pick Change Report
- Primary Pick Locations by Item
- Primary Pick Locations by Location
- Zero Quantity Inventory

FDM4 International Inc. 1297 Airport Road North Bay ON P1B 8G2 Canada
(705) 474-2090 salesinfo@fdm4.com www.fdm4.com

Financial Distribution Management FDM4 WMS ALL-INTEL 04282010. IBM logo and Business Partner emblem are trademarks of International Business Machines Corporation in the United States, other countries, or both.

